

SUMMARY OF MODELS OF FUSE-BASE AND FUSE HOLDERS

					
Type	SPB	S3PB	SPF	SP4..	SP50
Rated current I_n	160 A / 250 A / 400 A	160 A / 250 A / 400 A	160 A / 250 A / 400 A / / 630 A	50 A / 160 A / 400 A	630 A / 700 A
Rated voltage AC/DC U_n	690 V	690 V	690 V	690 V	690 V / 1 000 V / / 1 800 V
Size	00, 1, 2	00, 1, 2	00, 1, 2, 3	-	-
Size / fuse-link type	000, 00, 1, 2	000, 00, 1, 2	000, 00, 1, 2, 3	P50K06, P50R06, P50T06	P50U06, P52U06, P40U10, P50U10, P50V10, P50V16

Accessories				
Terminals		CS-SP-..	-	-
V-shaped clamps		48.., 58..	-	-
Contact covers		K..	-	-
End barriers		PK-S..	-	-
Transitional terminals		V.., W..	-	-
Terminals for parallel connection of fuse-links		-	-	CS-P50TUV-2PS..

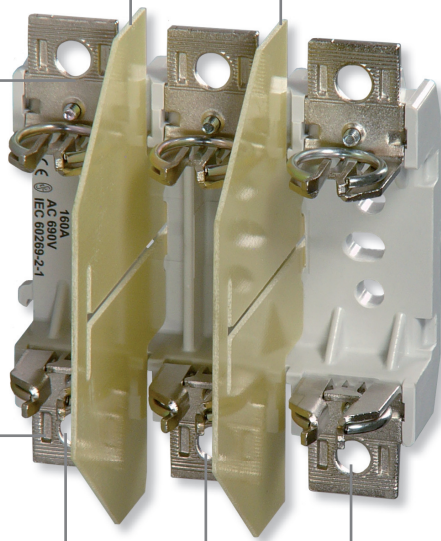
FUSE-BASES SPB, SPF

Description

Contact covers



Interpole barriers



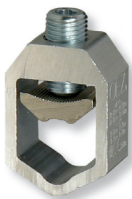
End barriers

- Fibreglass reinforced material.

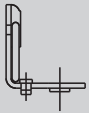
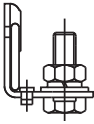
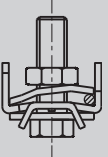









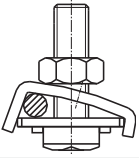
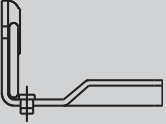
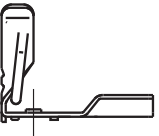


V-shaped clamp

- For connection of conductors to terminals of types „V“ or „W“.



Types of terminals

Marking	Terminal description									
	<p>Without marking</p> <p>Flat screw terminal: size 00 - hole diameter 9 mm (for screw M8) size 1, 2 a 3 - hole diameter 11 mm (for screw M10)</p>									
	<p>S</p> <p>Flat screw terminal:</p> <table border="1"> <thead> <tr> <th>Size</th> <th>Screws</th> <th>Torque</th> </tr> </thead> <tbody> <tr> <td>00</td> <td>M8 x 25</td> <td>10 ÷ 12 Nm</td> </tr> <tr> <td>1, 2, 3</td> <td>M10 x 30</td> <td>30 ÷ 35 Nm</td> </tr> </tbody> </table>	Size	Screws	Torque	00	M8 x 25	10 ÷ 12 Nm	1, 2, 3	M10 x 30	30 ÷ 35 Nm
Size	Screws	Torque								
00	M8 x 25	10 ÷ 12 Nm								
1, 2, 3	M10 x 30	30 ÷ 35 Nm								
	<p>P</p> <p>Terminal with clamp for direct connection of solid and stranded conductors 1 ÷ 50 mm² Cu and solid conductors 2.5 ÷ 50 mm² Al. It is possible to connect two conductors of cross-sections differing by up to 4 sizes, but of the same kind and type. With power supply SPB00, SPF00, S3PB00. Torque 8 Nm. Delivered as a set of 3 pieces without screws.</p> <table border="1"> <thead> <tr> <th colspan="3">Methods of connection of the P-terminal</th> </tr> </thead> <tbody> <tr> <td> <p>Connection of one conductor over 16 mm²</p>  </td> <td> <p>Connection of one conductor up to 16 mm²</p>  </td> <td> <p>Connection of two conductors</p>  </td> </tr> </tbody> </table>	Methods of connection of the P-terminal			<p>Connection of one conductor over 16 mm²</p> 	<p>Connection of one conductor up to 16 mm²</p> 	<p>Connection of two conductors</p> 			
Methods of connection of the P-terminal										
<p>Connection of one conductor over 16 mm²</p> 	<p>Connection of one conductor up to 16 mm²</p> 	<p>Connection of two conductors</p> 								
	<p>H</p> <p>Terminal with clamp for direct connection and looping of Cu/Al conductors 2.5 ÷ 50 mm². With power supply SPB00, S3PB00. Torque 8 Nm. Delivered as a set of 3 pieces without screws.</p>									
	<p>V</p> <p>V-shaped terminal for clamps type 4836 N-S, 4835 and 5836-2x70 for fuse-base size 00.</p>									
	<p>W</p> <p>V-shaped terminal for clamps type 5845 and 5837-2x240 for fuse-base size 1 and 2.</p>									

FUSE HOLDERS SP40, SP50



- Fuse holders are intended for fuse-links for semiconductor protection.
- The SP4 base is made of steatite of high mechanical strength and good heat resistance.
- The SP50 base is made of galvanized steel sheet. Contact carriers of steatite of high mechanical strength and heat resistance.

SP40 with ceramic base

Type	Order code	Description	Weight [kg]	Package [pcs]
SP40K06	OEZ:06529	for P50K06	0.200	3
SP40T06	OEZ:06530	for P50N06, P50R06	0.350	3
SP41T06	OEZ:10449	for P50T06	0.390	3

SP50 with steel base

Type	Order code	Description	Weight [kg]	Package [pcs]
SP50U06	OEZ:14131	for P40U06, P50U06	0.520	3
SP50U10	OEZ:06532	for P52U06, P40U10, P50U10	0.590	3
SP50V10	OEZ:06533	for P50V10	0.600	3
SP50X16	OEZ:10461	for P50V16	0.700	3

Accessories

Terminals for parallel connection of fuse-links

CS-P50TUV-2PS..

page G18

FUSE HOLDERS SP40, SP50

Specifications

Type	SP40K06	SP40T06	SP41T06	SP50U06
Standards	IEC 60269-4; EN 60269-4	IEC 60269-4; EN 60269-4	IEC 60269-4; EN 60269-4	IEC 60269-4; EN 60269-4
Approval marks				
Connection				
Bolt tightening torque	2 Nm	6 Nm	10 Nm	20 Nm
Degree of protection	IP00	IP00	IP00	IP00

Type	SP50V06	SP50U10	SP50V10	SP50X16
Standards	IEC 60269-4; EN 60269-4	IEC 60269-4; EN 60269-4	IEC 60269-4; EN 60269-4	IEC 60269-4; EN 60269-4
Approval marks				
Connection				
Bolt tightening torque	2 Nm	6 Nm	10 Nm	20 Nm
Degree of protection	IP00	IP00	IP00	IP00

Assignment of fuse-links to fuse holders, fuse bases and switch-disconnectors

Holder type	U _n [V]	P50K06	P50N06	P50R06	P50T06	P50U06	P52U06	P40U10	P50U10	P50V10	P50V16	P51R06	P51U06	P51V06
SP40K06	690	x												
SP40T06	690		x	x								SPF00 ¹⁾	SPF1 ¹⁾	SPF2 ¹⁾
SP41T06	690				x							SPB00 ¹⁾	SPB1 ¹⁾	SPB2 ¹⁾
SP50U06	690					x						S3PB00 ¹⁾	S3PB1 ¹⁾	S3PB2 ¹⁾
SP50U10	1 000						x	x	x			FH000 ²⁾	FH1 ²⁾	FH2 ²⁾
SP50V10	1 000									x		FH00 ²⁾	FH2 ²⁾	FH3 ²⁾
SP50X16	1 800										x			

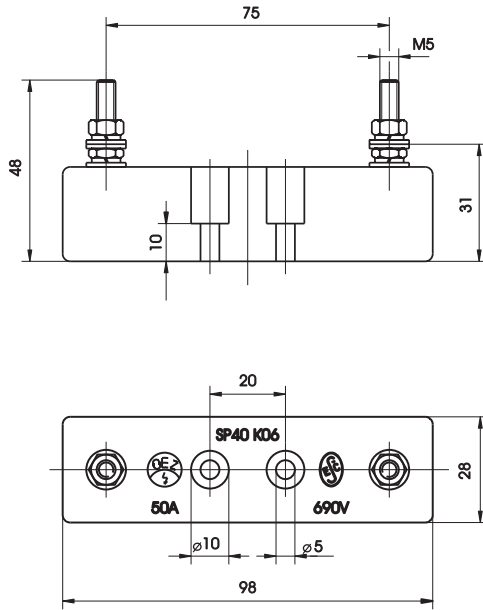
¹⁾ Connection conductor rating according to EN 60269-4

²⁾ For connection conductor rating see chapter: Conditions for use of fuses with blade contacts in fuse switch-disconnectors, page F34 ÷ F35

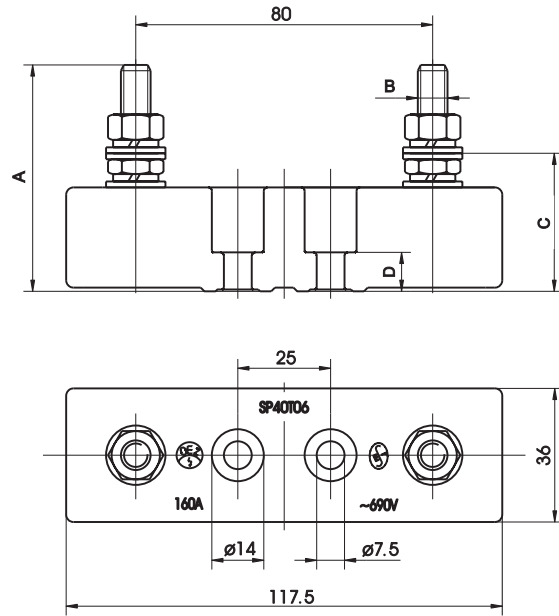
FUSE HOLDERS SP40, SP50

Dimensions

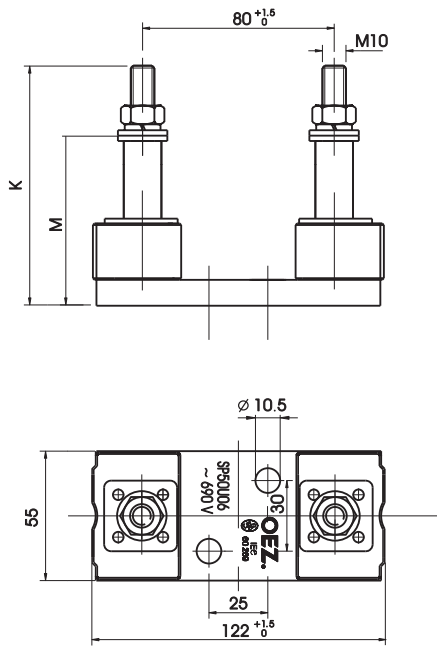
SP40K06



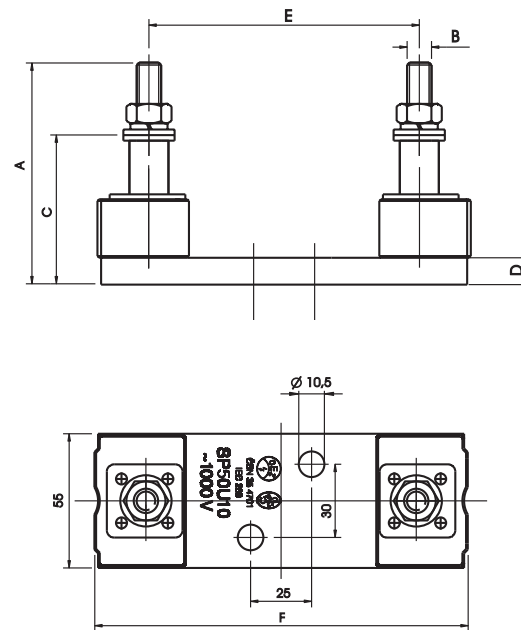
SP40T06, SP41T06



SP50U06



SP50.10, SP50X16



Type	A	B	C	D	E	F	K	M
SP40T06	59	M8	35.5	11	-	-	-	-
SP41T06	64	M10	38.0	11	-	-	-	-
SP50U06	-	-	-	-	-	-	89	59
SP50U10	90	M10	61.0	11	110	153	-	-
SP50V10	94	M10	65.0	11	110	153	-	-
SP50X16	101	M10	72.0	11	170	211	-	-

ACCESSORIES FOR SP40, SP50



Terminals for parallel connection of fuse-links

- To increase the rated current of the fuses, the fuse-links can be connected in parallel as pairs of P50... or quads of P50T06 provided the following conditions are met:
 - it is necessary to contact the manufacturer
 - fuse-links must be of identical type
 - rated current of fuse-link with max. 5 % difference of DC voltage drop
- The time/current characteristic of the set is identical to the time/current characteristic of individual fuse-link.
- The values of expected/prospective current must be multiplied by the number of fuses connected in parallel. The values of I_{2tc} of the set are equal to the product of I_{2tc} of individual fuse-link and square of the number of parallel fuse-links.
- Power losses of the parallel connection are approximately equal to the sum of power losses of individual fuses.

Example:

4 fuse-links connected in parallel P50T06 250 A aR with I_{2tc} for selected current 51 000 A²s.
 I_{2tc} of the set: $51\,000 \times 4^2 = 816\,000 \text{ A}^2\text{s}$

Terminals for parallel connection of fuse-links

I_n [A]	Type	Order code	Terminal thickness [mm]	Weight [kg]	Package [pcs]
400 ÷ 800	CS-P50TUV-2PS800	OEZ:15585	3	0.165	5
1 000	CS-P50TUV-2PS1000	OEZ:15586	4	0.221	5
1 250	CS-P50TUV-2PS1250	OEZ:15587	5	0.277	5
1 600	CS-P50TUV-2PS1600	OEZ:15588	6	0.332	5

For connection of other number of fuse-links in parallel, it is recommended to contact the manufacturer

Dimensions

